

FRONTLINE SOLUTIONS

Frontline Geological & Mineral Resources
Solutions (Pty) Ltd 2020/122348/07



DO HARD THINGS - YOU CAN DO BETTER
www.frontlinesolutions.biz

OUR EXECUTIVE TEAM



Chief Executive Officer
Patrick J Fann

Entered the freelance consulting space as an entrepreneurial businessman in January 2019. After 30 years as a professional in the South African mining and exploration industry, Patrick's executive skills have allowed him to forge a strong reputation for consistency, delivery, and ethics. As a registered professional with the South African Council for Natural Scientific Professions (SACNASP), and wide corporate experience, Patrick is well positioned to offer a tailored portfolio of services.





DO HARD THINGS - YOU CAN DO BETTER

OUR CAPACITY



Patrick Fann, as the principal geologist and Chief Executive Officer, is a registered professional natural scientist with the South African Council of Natural Scientific Professions (SACNASP), registration number 400004/92, and a competent person for gold (both Witwatersrand and Archean deposits) and Bushveld Complex deposits of PGM's and chrome. He has gained wide experience in pegmatite deposits (hosting lithium and tantalum as well as the common minerals such as quartz, mica and feldspars) as well as base metal deposits. Experienced in mineral exploration and project management, he is positioned to provide a wide range of mineral resource solutions.

With over thirty years of corporate experience and eight years in the non-profit sector, Patrick has developed the capacity to advise, consult and train in various aspects of human resources, policies and procedures, corporate culture development, and team-building. As a seasoned corporate workshop facilitator, Patrick finds this environment a stimulating departure from the mineral resources industry.



Frontline has network partners primed to provide the following ancillary exploration, geological and mining services:



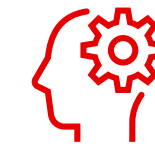
Geological Exploration



Mineral Resource Management



Mining



New Business Development



Leadership Development



Active Evolution of Green to Brown Fields Projects



Contract Mining



Corporate Workshop Facilitation

DO HARD THINGS - YOU CAN DO BETTER



**FRONTLINE
SOLUTIONS**



Frontline has network partners primed to provide the following ancillary exploration, geological and mining services:

- ✓ **Exploration drilling - percussion, reverse circulation, and core drilling, all various diameters.**
- ✓ **Geostatistical analysis and modeling.**
- ✓ **3D modeling of geological data to provide orebody parameters.**
- ✓ **Geotechnical and geophysical surveys.**
- ✓ **Mining sequence modeling, planning and mine feasibility studies.**
- ✓ **Consulting mining engineers.**
- ✓ **Contract Mining.**
- ✓ **Mineral Processing.**





HARD WORK

We fear no task that is too big! We will take it head on.



PASSION DRIVEN

Passion is our fuel and we take pride in our work every day!



TIMELINE DEDICATED

Your deadlines are important to us and we want to see you succeed.

OUR CORE VALUES

DO HARD THINGS - YOU CAN DO BETTER

Portfolio of Clients and Projects

TKR Operations (Pty) Ltd

Frontline started consulting to TKR reporting directly to the founder and MD, Mr Eddie Pienaar in 2019; consulting on possible new business ventures in the mineral exploitation field, e.g. iron ore, diamonds, chrome and PGM deposits. Also consulted with TKR primarily as a business analysts for their mining operations for Tharisa Mine.

Tholo International (Pty) Ltd

Frontline consulted to Tholo International, reporting directly to founder, Mr Ike Tholo, engaged primarily to investigate mineral exploration and mining opportunities in South Africa.

During this time the farms owned by the Roka-Phasha tribal community (on the Eastern Limb of the Bushveld Complex, Limpopo) were investigated and the tribal council were provided consultation on both exploration and mining potential.



Portfolio of Clients and Projects

Southern African Lithium and Tantalum Mining (Pty) Ltd (SALT)

Through general investigations and research by Frontline, the Blesberg Pegmatite was found to be an excellent investment opportunity. Connection was made with SALT (the owning entity) and the major shareholder and principal geologist, Mr Peter Hibberd. Over the period of more than a year, Frontline collaborated with Mr Hibberd on the marketing of SALT (the Blesberg lithium and tantalum deposit) and the development of various valuation and business case scenarios for this purpose.

Kapachi Business Enterprises CC

Kapachi were engaged by the Baroka tribe (Baroka Tribal Mining (Pty) Ltd) for the potential exploration of various farms owned by the community in Limpopo. Consultation was provided on geological exploration potential and a number of formal desktop studies conducted on some of primary targeted farms.



Portfolio of Clients and Projects

Umbono Resources (Pty) Ltd

Umbono were engaged by Village Main Reef (Pty) Ltd (VMR) to conduct an exploration programme on the Black Reef Zone in the Klerksdorp area. Umbono, not having an in-house competent person for gold exploration, engaged the services of Frontline for the auditing of their exploration results and the compilation of a Competent Person's Report (CPR). This was then presented to the VMR executive management.

Xwena Mineral Resources (Pty) Ltd

Frontline were engaged by the founder and CEO, Mr Johann Appies, for the investigation of various mineral assets in Zimbabwe. These included gold, copper and pegmatite deposits (lithium and tantalum) across the country. Detailed on-the-ground investigations and desktop studies were conducted. Following on from these, detailed exploration proposals were drawn up for the prioritised assets.



Portfolio of Clients and Projects

Lombard Insurance

Lombard Insurance underwrites the funding for the environmental rehabilitation of mining assets. In some cases they require detailed investigations and interpretations of Competent Person's Reports for these assets, especially for potential new clients. In these cases Frontline provides expert services in detailed risk analyses for the Lombard executives.

The Mineral Company (Pty) Ltd & Mainland Investments CC

The principal geologist of this partnership, Mr Peter Hibberd, engaged Frontline for the task of consulting on the Kruisrivier Project, a narrow-veined cobalt and gold deposit in Limpopo. tasks involved were basic studies, field investigations, mapping and sampling of the deposit, and further exploration proposals.



Portfolio of Clients and Projects



Lifelong Resources (Pty) Ltd (LLR)

Frontline was engaged for the purpose of a Competent Person's Report (CPR) on the company's resource base. LLR at the time required funding for the design and construction of their own reduction plant for their run-of-mine production.

Greendesign South Africa (Pty) Ltd

Frontline were engaged for the primary purpose of consulting and assisting in the establishment of corporate systems such as employee contracts, job descriptions, performance appraisals, policies and procedures, standard operating procedures, and the implementation and monitoring thereof. Reporting to the CEO of a shareholder company, NxtGen Africa (Pty) Ltd, Mr Nolo Mokoena.

Crtve Development NPC

Frontline were engaged by the directors, Dr Okito Wedi and Mr Nolo Mokoena (of NxtGen Africa (Pty) Ltd) for consulting and assisting in the establishment of corporate systems such as employee contracts, job descriptions, performance appraisals, policies and procedures, standard operating procedures, and the implementation and monitoring thereof. In addition, consultation and assistance was provided on programme planning and budgeting, providing a solid base for sustainable operation of a non-profit company.





FRONTLINE
SOLUTIONS

DO HARD THINGS - YOU CAN DO BETTER

CONTACT US

Email or Call Us:

+27 (0)82 337 3534

patrick@frontlinesolutions.biz

Website :

www.frontlinesolutions.biz

